

---

# DOWNTOWN CAMPUS CENTER

Business and Financial Strategic Initiatives



---

# DOWNTOWN CAMPUS CENTER PROJECT TEAM

---

- **Executive Sponsors:** Michael Reese and Dan Feitelberg
  - **Design and Construction Project Manager:** Fran Telechea
  - **Transition Team:** Andy Boyd, Jason Martin, Cruz Franco, Maggie Saunders, Jessica Duffy
  - **Advisory Committee:** Michael Reese, Andy Boyd, Brian Gresham, Ann Kovalchick, John Jackson, Mike Riley, Brian Powell, Luanna Putney, Virginia Lerer, Greg Camfield, Dan Feitelberg
-

# THE DOWNTOWN CAMPUS CENTER



## **Building Details**

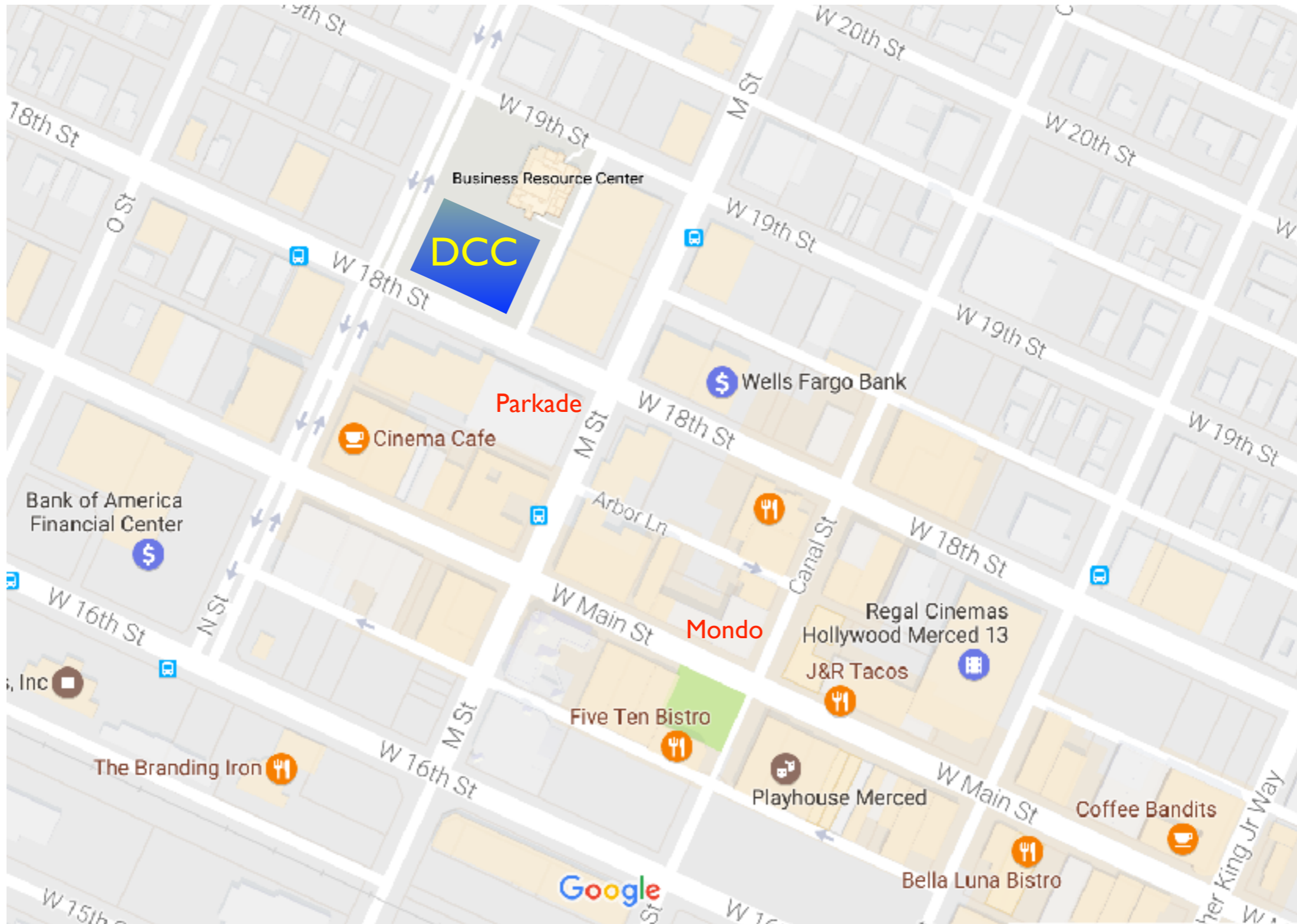
Architect: Heller Manus Architects, San Francisco

Size: 67,400 GSF, 3 stories tall

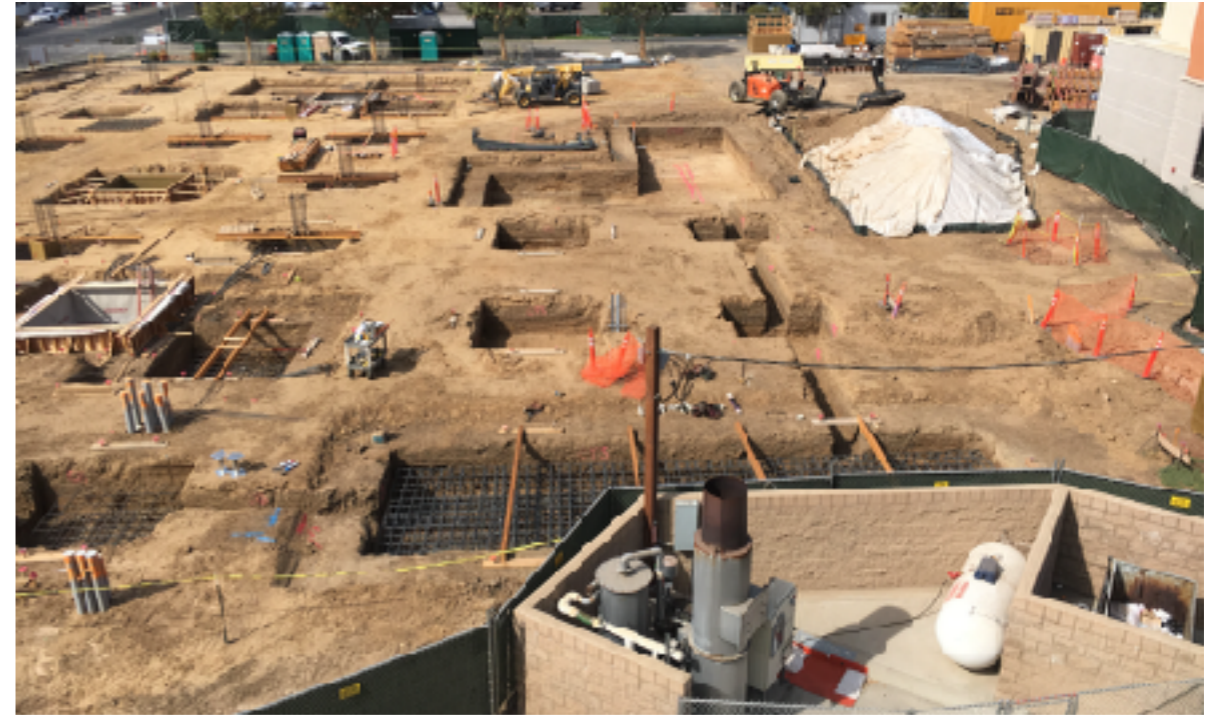
Construction Cost: \$45 million

Sustainability: LEED Gold, Solar-ready roof

# DOWNTOWN CAMPUS CENTER LOCATION



# CURRENT CONSTRUCTION



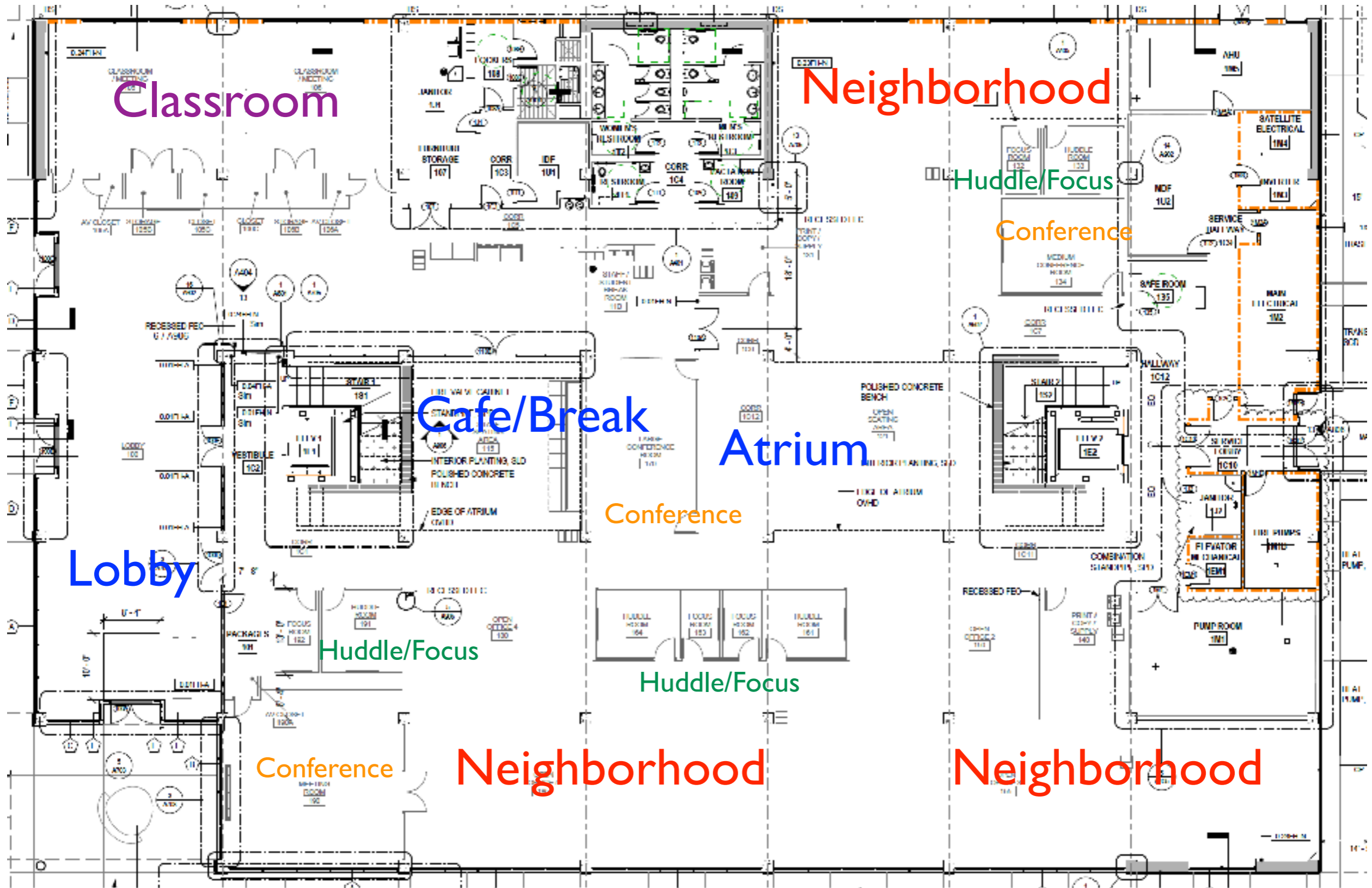
---

# INTERIOR ENVIRONMENT

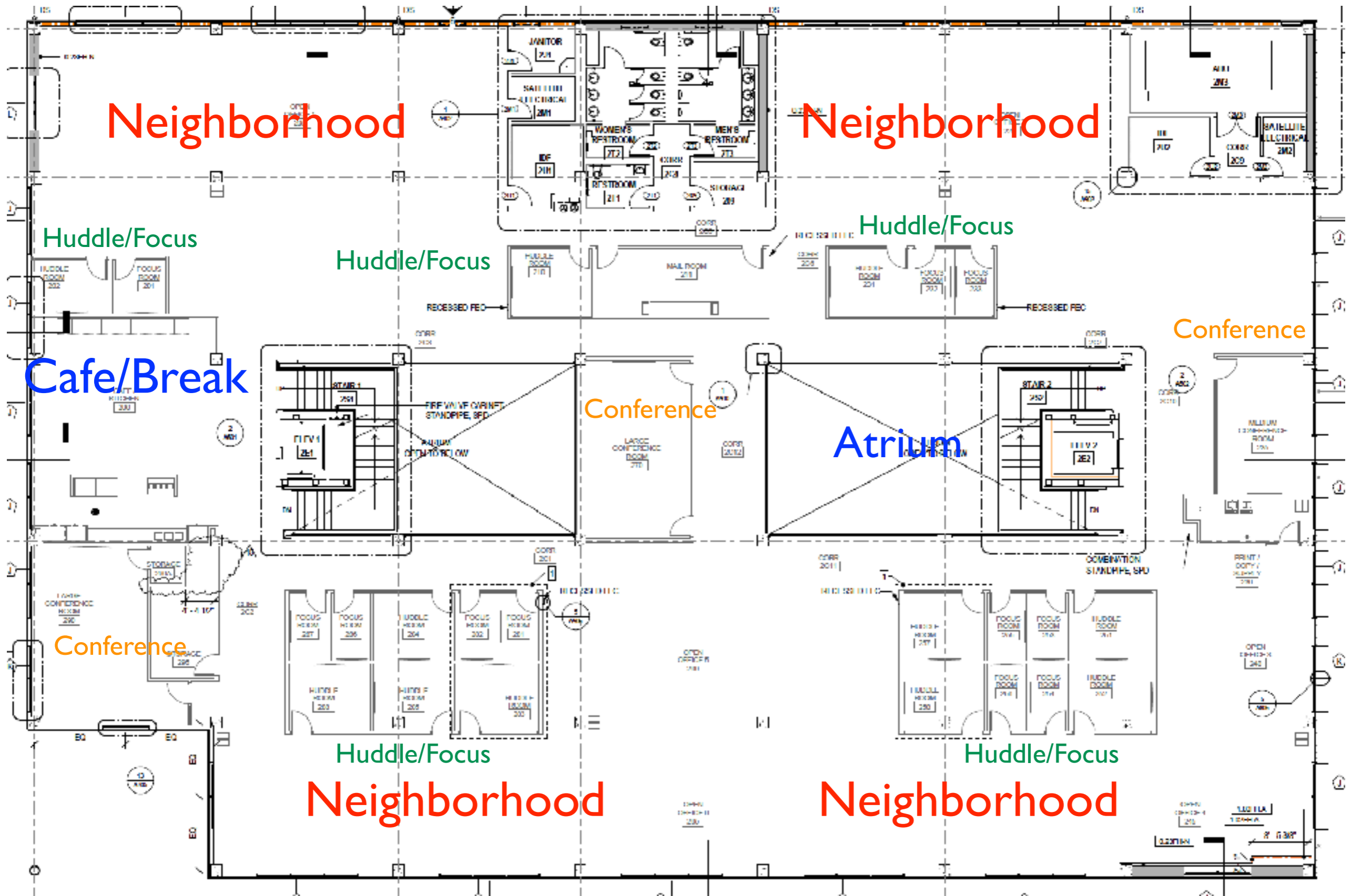


- Dynamic, flexible spaces. Areas for group work, state-of-the-art conference areas and focus spaces will provide privacy, confidentiality and the ability to work uninterrupted.
  - 26 Huddle Rooms, 26 Focus Rooms, 6 Large Conference, 3 Medium Conference, 2 Classrooms, 3 Cafe/Break Areas, Large central Atrium area with soft seating.
-

# First Floor



# Second and Third Floor



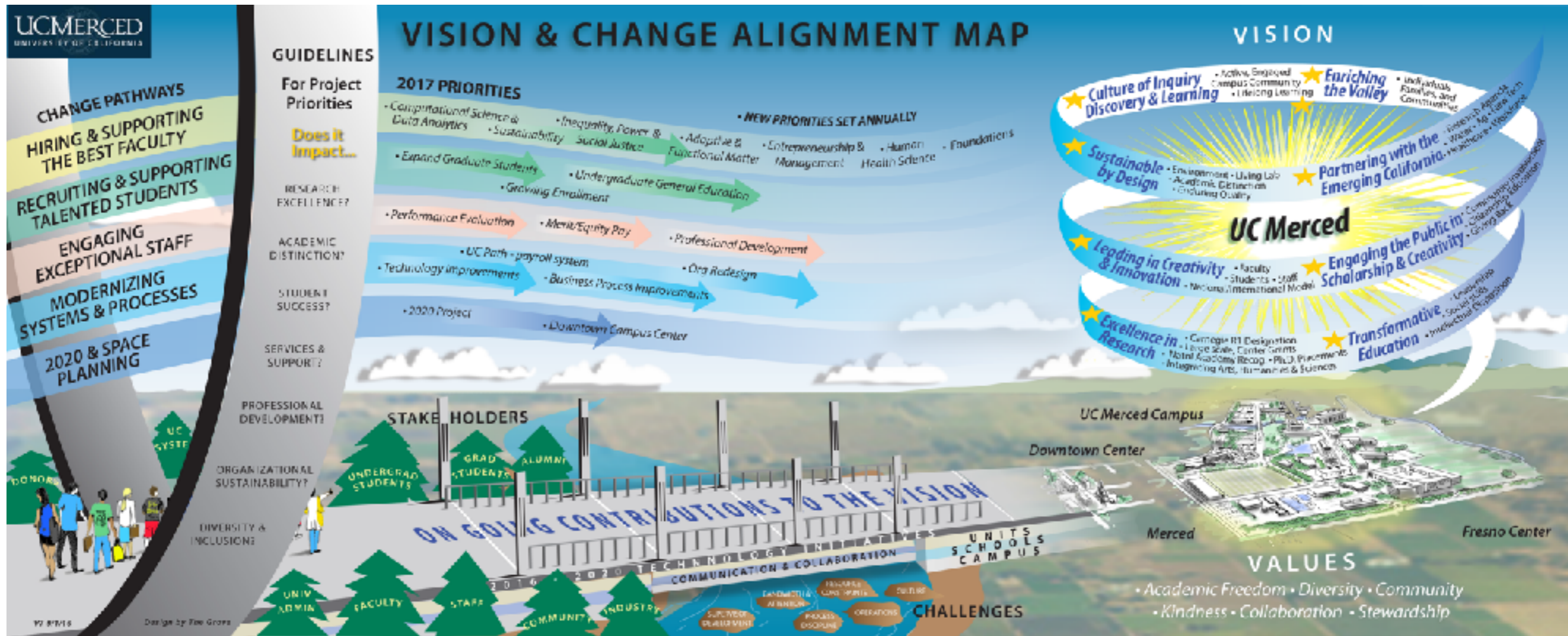


---

# Q&A:

- Questions about the Downtown Campus Center Building, layout, design?

# DOWNTOWN CAMPUS CENTER AND THE CAMPUS VISION



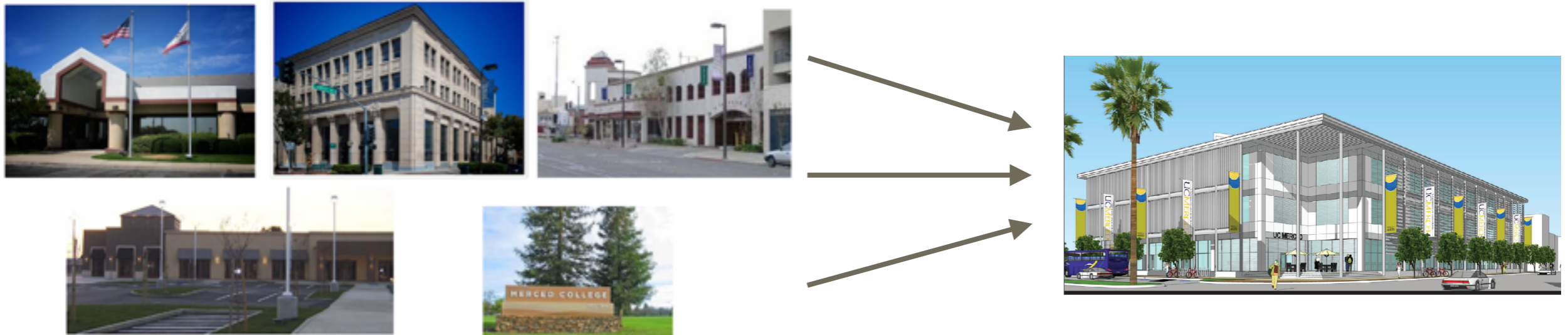
- Organizational Sustainability
- Enriching the Valley
- Partnering with the Emerging California
- Modernizing Systems and Processes

---

# WHO IS MOVING TO THE DOWNTOWN CAMPUS CENTER?

---

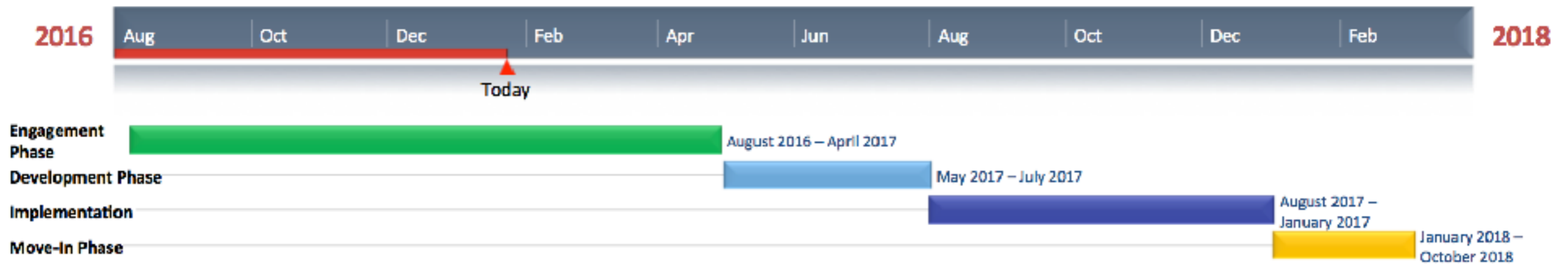
- Staff currently located at the Promenade, Mondo, Parkade and Castle (IT and Research Operations)
- 30+ Departments [BFSI.UCMERCED.EDU “Floor Plans”](https://www.bfsi.ucmerced.edu/floor-plans)
- 300 Staff, Phased Move-in
- UC Merced Extension Program



# WHEN?



- Building completed January 2018
- Move-in staged starting in Spring 2018
- Move coordinated around operational impact



---

# Q&A:

- Questions about who is moving, when/how the move will happen?

---

# HOW WILL WE GET THERE?

## TRANSITION PLANNING

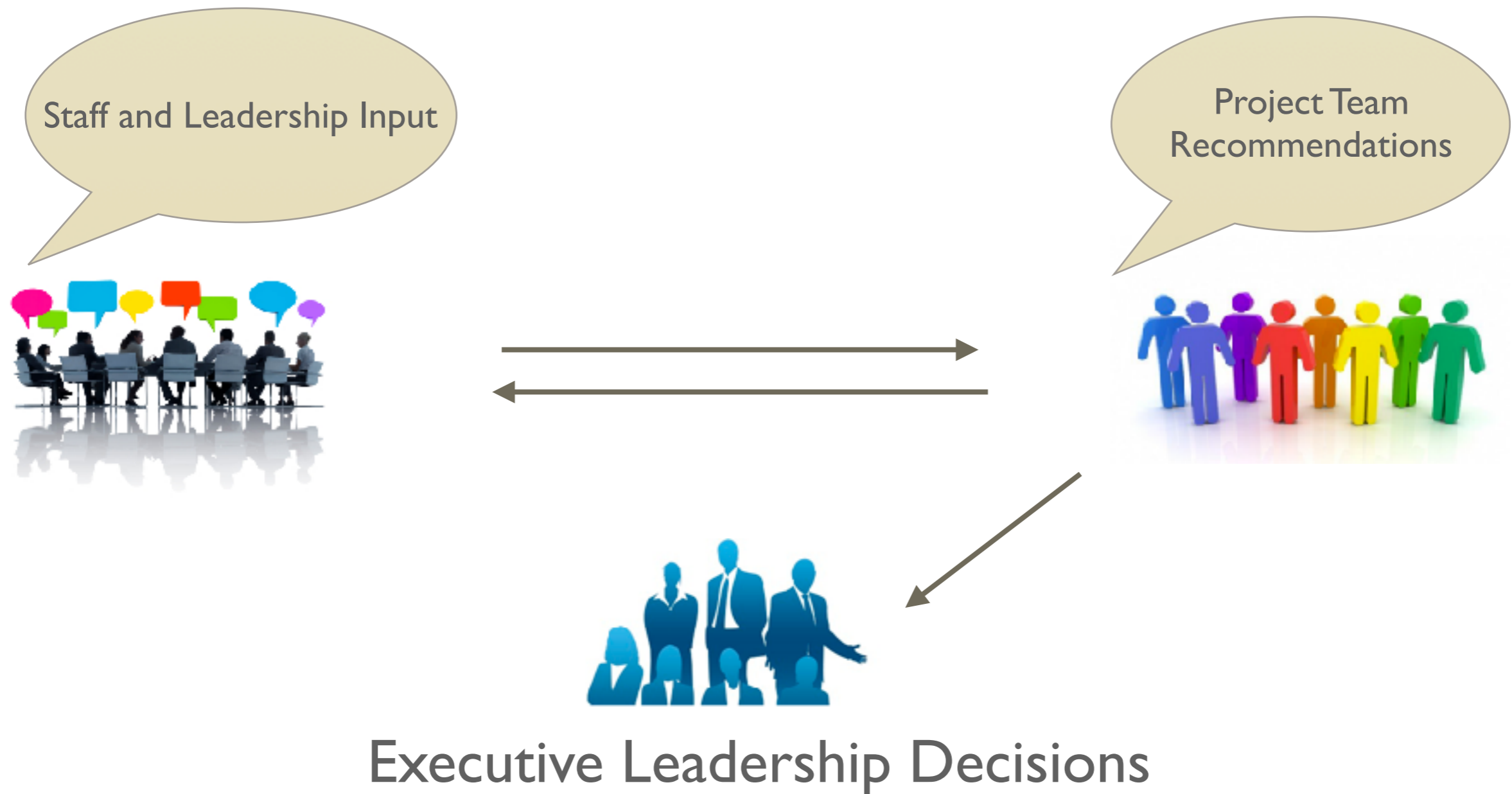
---

- **Ten (10) Project “Work-streams”** based on the feedback we got from you
  - **Project Teams** are comprised of subject matter experts, stakeholders and campus leaders.
  - **Transition Team** coordinates and supports project teams
  - **Decisions** for the DCC are made by the executive leadership of the campus
-

---

# ENGAGEMENT PROCESS

---



---

# PROJECT WORKSTREAMS

---

- **Technology:** VOIP, Room-scheduling, Printing, Scanning
  - **Going Paperless:** Document Management, Business Process Updates
  - **Governance:** Community standards, neighborhood norms, decisions
  - **Culture and Place-Making:** Interior design, branding
  - **Furniture and Space Planning:** Neighborhood design, layouts, ergonomics
  - **Safety, Parking and Transportation**
  - **Training:** How we use our new space and technology solutions
  - **Alternative Work and Campus Workspace:** Hoteling, telecommuting, alternative work schedules
  - **Operations Team:** Operations and administrative support, move-coordination
  - **Communications:** Keeping you up-to-date before and after the move
-



---

# WHERE ARE WE NOW? WHAT IS NEXT?

---



- **Space, Furniture, Neighborhoods** are being designed using your input. Thank you!!
  - **Document Digitization**, disposition and **Business Process Updates** are in progress.
  - **Parking, Transportation and Safety** planning has begun
  - **Technology projects** (Room scheduling, VOIP, Printing) have started.
  - **Governance, Alternative Work Strategy, Place-Making, Training and Operations** project teams will begin planning efforts this Spring.
  - **Spring and Summer Staff Workshops** on Neighborhood Culture, Governance, etc. will be taking place in Spring/Summer of 2017
-

---

# Q&A:

- Questions about the Downtown Campus Center Workstreams, or project teams?



---

# FEEDBACK: WE WANT TO HEAR FROM YOU!



---

# WHAT ARE WE MISSING?

- What do our project teams need to know about you, or your department, to make the Downtown Campus Center a success?

